

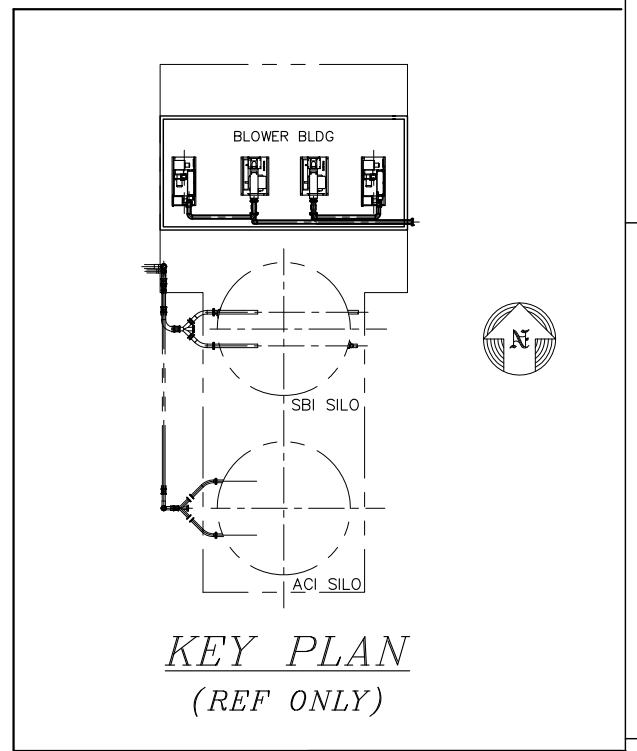
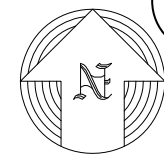
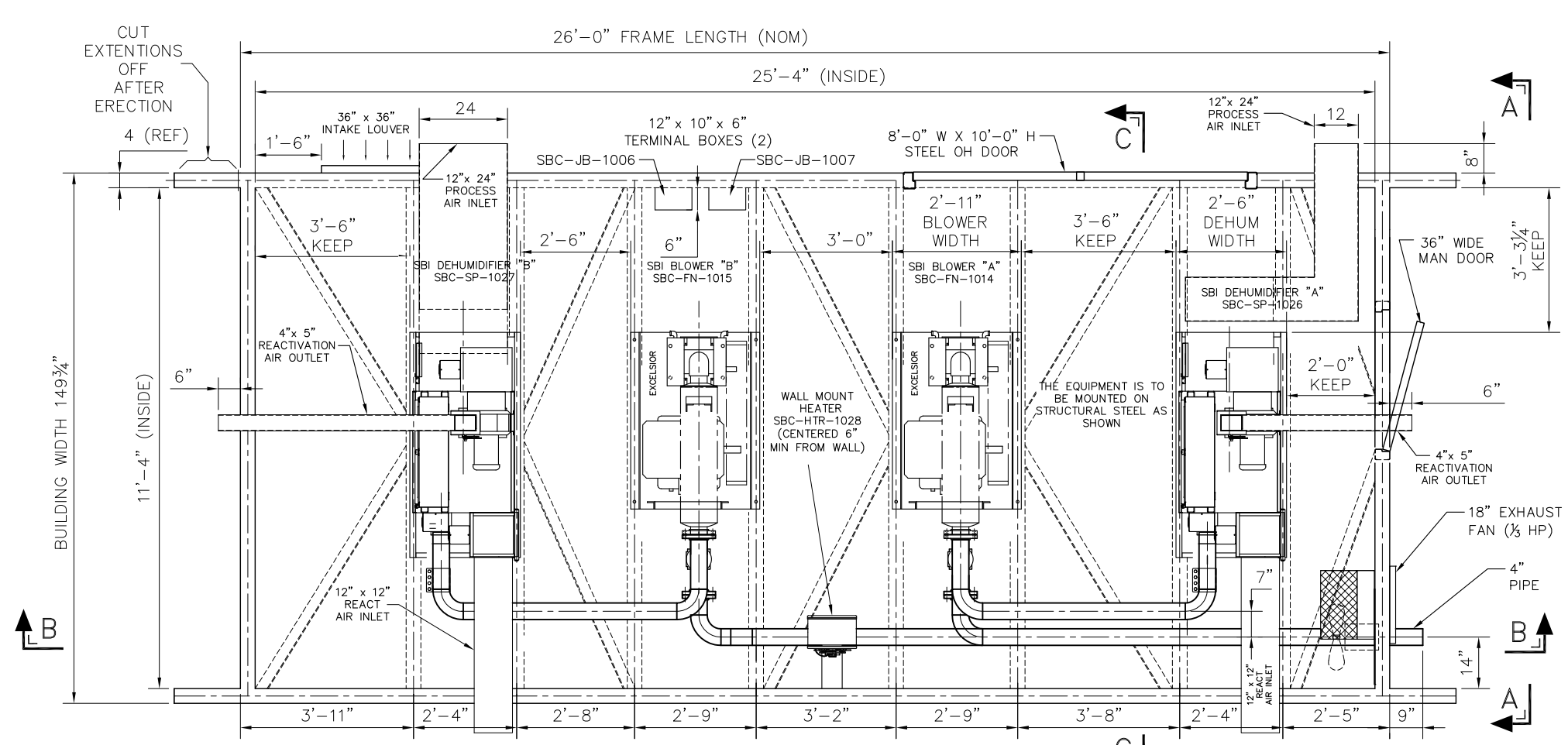
NOTES:

- METAL BUILDING CERTIFICATION SHALL CONFORM TO THE REQUIREMENTS OF THE 2010 FLORIDA BUILDING CODE.
- BUILDING DESIGN SHALL COMPLY WITH SEISMIC AND WIND LOAD REQUIREMENTS IN ACCORDANCE WITH 2010 FLORIDA BUILDING CODE AND ALL APPLICABLE FLORIDA STATE AND LOCAL CODES.
- SAFELY LOCATE AND AFFIX EQUIPMENT ON FLOOR STRUCTURAL STEEL AS SHOWN.

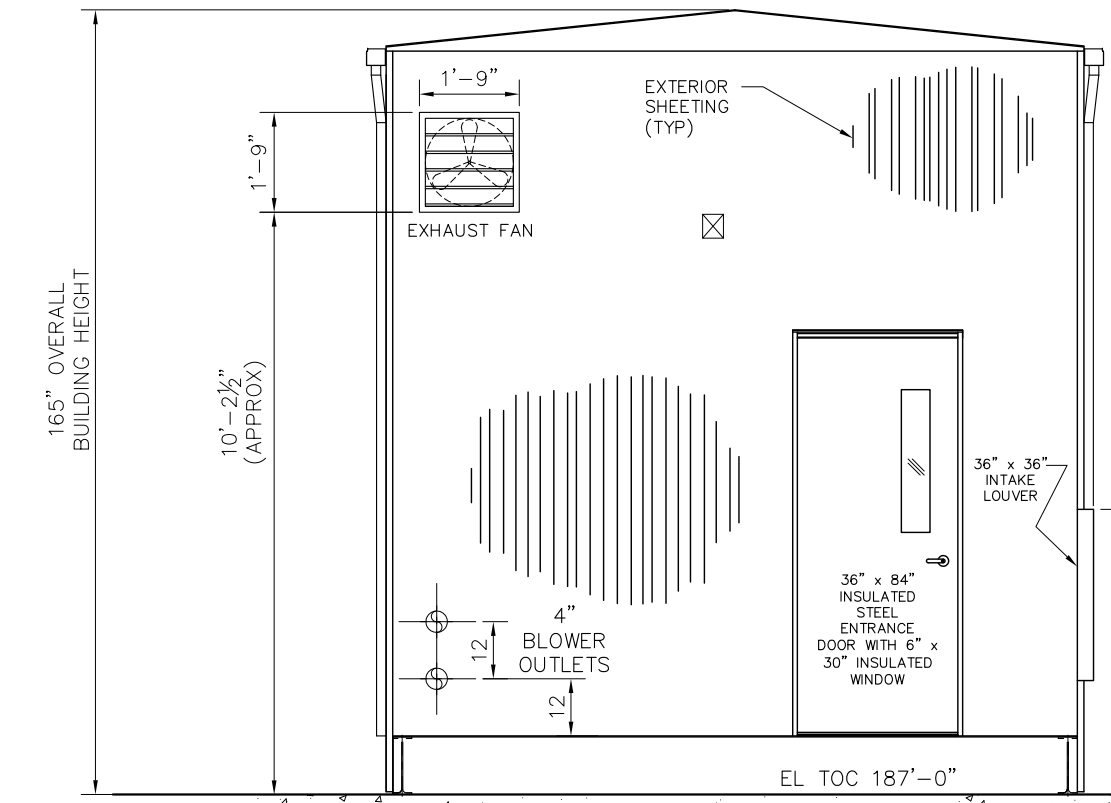


By Andy Bilmanis on Sep 17, 2012
 This review does not supersede requirements of purchase order, design drawings, specifications, codes or regulations. The contractor / supplier is not relieved from responsibility for errors or omission.

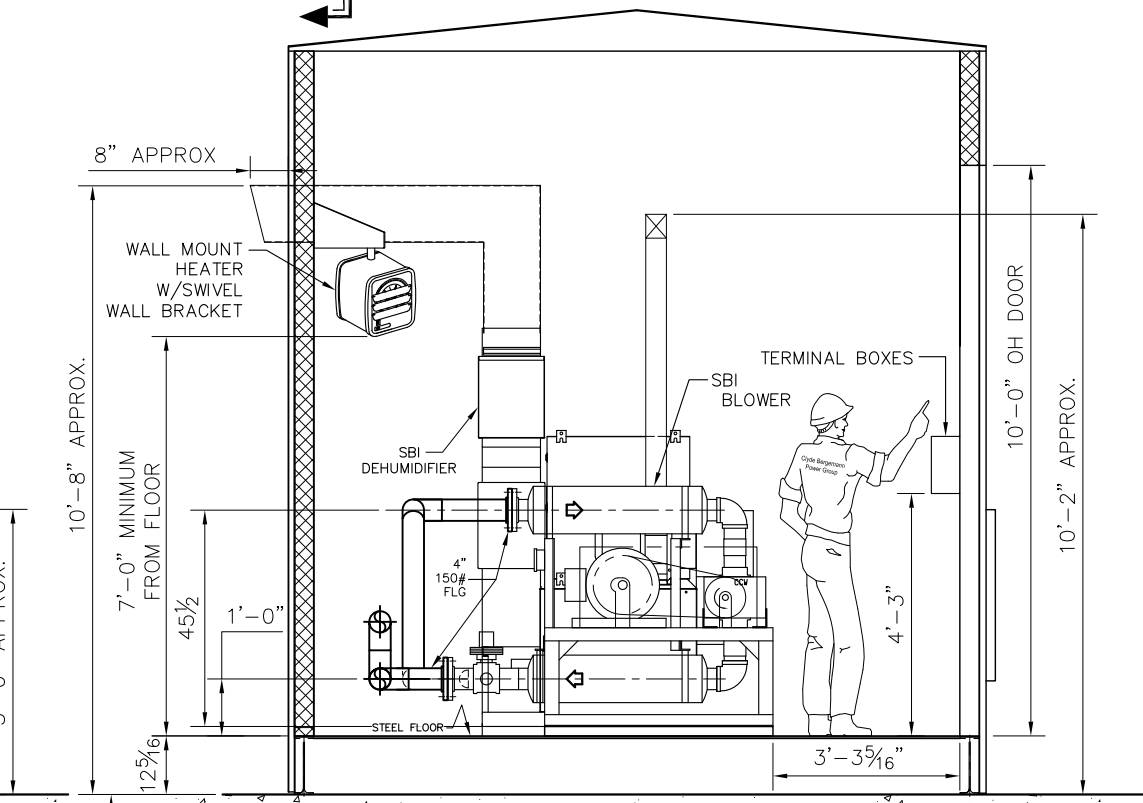
PLAN VIEW



KEY PLAN
(REF ONLY)



VIEW A-A
LOOKING WEST



SECTION C-C
LOOKING WEST

CERTIFIED
 For: **METSO POWER INC.**
 P.O. No.: **40034B-2**
 By: **R. LE GOFF**
 Date: **8/27/12**

METSO ID: P00121846

THIS DOCUMENT AND THE INFORMATION IT CONTAINS ARE THE PROPERTY OF CLYDE BERGEMANN MALVERN, ARE DISCLOSED IN CONFIDENCE FOR LIMITED USE, AND MUST BE SURRENDERED TO CLYDE BERGEMANN MALVERN ON DEMAND. DISCLOSURE, PUBLICATION, DUPLICATIONS, OR DISTRIBUTION OF THIS DOCUMENT WITHOUT PRIOR WRITTEN AUTHORIZATION FROM CLYDE BERGEMANN MALVERN IS PROHIBITED. COPYRIGHT CLYDE BERGEMANN MALVERN AS OF THE DATE "DRAWN" OR "REVISED".

CLYDE BERGEMANN Power Group
 33 Sproul Road
 Malvern, PA 19355 USA

SODIUM BICARBONATE INJECTION SYSTEM
 METSO POWER
 GAINESVILLE, FLORIDA

BLOWER BUILDING
GENERAL ARRANGEMENT

CONTRACT No. C-1445	DWG. No. D1108	SHT: 1 OF 2
SCALE: NTS	REV. 0	

REV.	ZONE	DESCRIPTION	APP'D	DATE	REV.	ZONE	DESCRIPTION	APP'D	DATE	APPROVED
0	-	UPDATED AND RELEASED	BH	8/23/12	C	-	REVISED ORIENTATION OF BLOWERS AND DEHUMIDIFIERS	BH	06.28.12	DRAWN
D	-	REVISED BUILDING HEIGHT	BH	8/22/12	B	-	ISSUED FOR CONSTRUCTION	BH	06.11.12	CHECKED
					A	-	INITIAL ISSUE	BH	06.07.12	APPROVED
								ATC	06.07.12	APPROVED

SB Rev. 1

M014200-BLURE00053 S01 R1

RECEIPT ACKNOWLEDGED | Confirmation that an information only drawing/document has been received